

# Top Tips for Mini-Beast Hunting



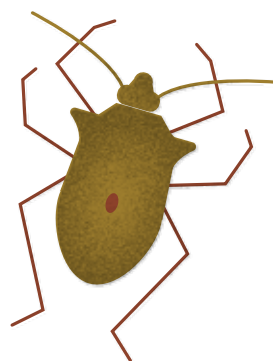
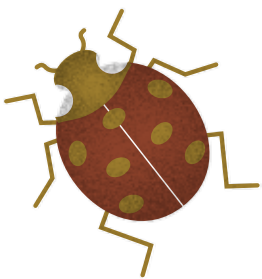
## You will need:

- ◇ A net
- ◇ A jar

*(Jars with a magnifying glass lid aren't expensive and can give you a great view of your insect up close.)*

From caterpillars and millipedes to beetles and spiders, hunt along the canal to find creatures of all shapes and sizes.

1. Be gentle and move slowly, you're more likely to find and catch something interesting.
2. When you have found a creature put your jar beside it and nudge it gently with a blade of grass or your finger to encourage it into your jar.
3. Look behind bark, under stones, at the bottom of clumps of grass or in dark and damp places, this is where some creatures like to hide.
4. Look at how your creature moves and where it lives. How many legs does it have? How does it move around? Can you see its eyes? What do you think it eats? What might eat it?
5. Draw your creature and see if you can identify it when you get home.



## Remember to....

- ◇ Never put a wet and dry creature together in your jar as they will stick together.
- ◇ Always return your creature to the place you found it.
- ◇ Be gentle, mini beasts are very fragile.