

BARTON AQUEDUCT POCKET PARK

You will need:

- ◇ Plasticine
- ◇ Clay modelling tool
- ◇ Paper
- ◇ Paint

1. Start with a lump of plasticine and shape it so it has a handle at one end. Bang it on a table to create a flattened surface.



3. You may need to gently flatten the surface again by pressing it on the table.

5. Wash the plasticine stamp and use again with a different colour to create a lovely piece of patterned paper.



Make your own stonemason stamp



Did you know...?

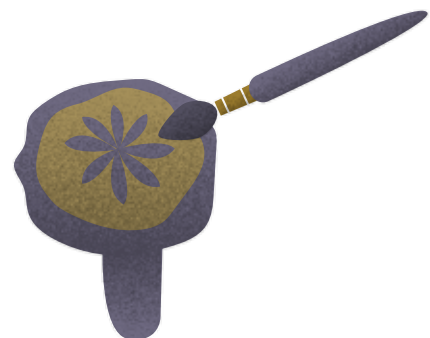
Stonemason marks can be found carved into the stone blocks that make up the wall of the old stone aqueduct at Barton Aqueduct Pocket Park.

They were made by the people that cut the building blocks by hand. Have a go at making your own.

2. Use a clay modelling tool or a stick to create your pattern on the flattened surface.



4. Apply some paint to the patterned surface and stamp onto some paper.



I've designed my own mark
Date: